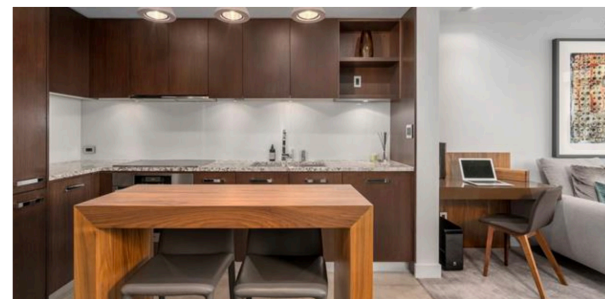
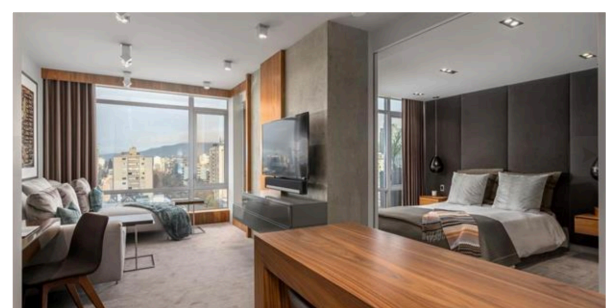




FEATURED LISTING | PATINA BY CONCERT PROPERTIES

1407-1028 BARCLAY STREET, VANCOUVER

\$868,500



PROPERTY FEATURES

World Class Residence in the prestigious PATINA - Concert Properties' Flagship development. This extensively renovated and beautifully designed 1 bedroom + den feels like a 5 star luxury hotel suite. Enjoy floor to ceiling windows with luxurious drapery, exposed concrete, beautiful lighting design all within an open plan suite with movable wall for bedroom privacy. Appreciate Air-Conditioning, Mohair feature bedroom wall, built in bedside tables, desk, media consoles and customized mill work throughout. Spa like bathroom, rain shower, heated floors and bath towel rack. This home includes a spacious 100 sq ft terrace. Building amenities include concierge services, fitness centre, entertainment and lounge and common roof deck. Showings by Private Appointment

QUICK FACTS

BEDROOMS: 1+ Den	STOREYS: 1	PARKING: 1
BATHROOMS: 1	TYPE: Upper Unit	STORAGE: No
AREA: INT 663sq. ft. EXT 98sq. ft.	VIEW: City, Mountain, & Ocean	DEVELOPMENT: Patina by Concert

CONTACT

604-715-2605 | INFO@MALKINREALESTATEGROUP.COM

MALKINREALESTATEGROUP.COM