

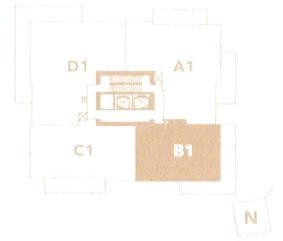
# PLAN B1

2 BEDROOM +  
FLEX

11TH - 35TH (ODD FLOORS)  
INDOOR 1,085 SQFT (APPROX)  
OUTDOOR 350 SQFT (APPROX)

## APPLIANCES

- 36" INTEGRATED SUB-ZERO REFRIGERATOR
- 36" WOLF 5 BURNER GAS COOKTOP
- 36" WOLF 5.5. CHIMNEY HOODFAN
- 30" WOLF DUAL CONVECTION OVEN
- 30" WOLF MICROWAVE
- INTEGRATED ASKO DISHWASHER
- SINK DISPOSAL
- 24" INTEGRATED SUB-ZERO WINE FRIDGE
- HIGH-EFFICIENCY FULL SIZE MAYTAG WASHER AND DRYER



Visit [malkingroup.com/1335-howe/](http://malkingroup.com/1335-howe/) or call 778 737 7562 to register with Malkin Real Estate Group for your private viewing.